

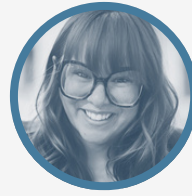
# STATE SENATE DISTRICT 10

## CANYON COUNTY



**TAMMY NICHOLS (R)**

[VIEW FULL SURVEY RESPONSES](#)



**LETISHIA SILVA (D)**

NO RESPONSE

**Q1: Do you support strengthening Idaho's pro-life laws by removing the existing exceptions for cases of rape and incest?**

NICHOLS: Yes

SILVA: No Response

**Q2: Do you support a prohibition on abortifacients that can end preborn life after fertilization, including Plan B, Julie, Ella, and copper or hormonal IUDs?**

NICHOLS: Yes

SILVA: No Response

**Q3: Would you support legislation that holds educators and school districts accountable for indoctrinating students with critical race theory, gender ideology, and Diversity, Equity, and Inclusion (DEI) ideology?**

NICHOLS: Yes

SILVA: No Response

**Q4: Would you support legislation that makes sexual education parental opt-in rather than opt-out?**

NICHOLS: Yes

SILVA: No Response

**Q5: Would you support legislation that protects traditional, biblical marriage between one man and one woman?**

NICHOLS: Yes

SILVA: No Response

**Q6: Would you support legislation that prohibits displays of indecency, such as drag exhibitions, in public places when minors are present?**

NICHOLS: Yes

SILVA: No Response

**Q7: Do you support the legalization of medical or recreational marijuana in Idaho?**

NICHOLS: Don't Know

SILVA: No Response

**Q8: Would you support legislation that allows public school teachers to read the Bible during class time without instruction or comment?**

NICHOLS: Yes

SILVA: No Response

**Q9: Do you support legal protections for the privacy and safety of biological females in bathrooms, locker rooms, government buildings, and prisons?**

NICHOLS: Yes

SILVA: No Response

**Q10: Would you support extending the state child tax credit to preborn children?**

NICHOLS: Don't Know

SILVA: No Response

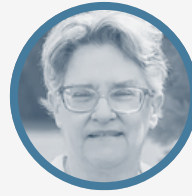
# STATE HOUSE DISTRICT 10A

## CANYON COUNTY



**MIKE MOYLE (R)**

NO RESPONSE



**NANCY PARKER (D)**

[VIEW FULL SURVEY RESPONSES](#)

**Q1: Do you support strengthening Idaho's pro-life laws by removing the existing exceptions for cases of rape and incest?**

MOYLE: No Response

PARKER: No

**Q2: Do you support a prohibition on abortifacients that can end preborn life after fertilization, including Plan B, Julie, Ella, and copper or hormonal IUDs?**

MOYLE: No Response

PARKER: No

**Q3: Would you support legislation that holds educators and school districts accountable for indoctrinating students with critical race theory, gender ideology, and Diversity, Equity, and Inclusion (DEI) ideology?**

MOYLE: No Response

PARKER: No

**Q4: Would you support legislation that makes sexual education parental opt-in rather than opt-out?**

MOYLE: No Response

PARKER: No

**Q5: Would you support legislation that protects traditional, biblical marriage between one man and one woman?**

MOYLE: No Response

PARKER: No

**Q6: Would you support legislation that prohibits displays of indecency, such as drag exhibitions, in public places when minors are present?**

MOYLE: No Response

PARKER: No

**Q7: Do you support the legalization of medical or recreational marijuana in Idaho?**

MOYLE: No Response

PARKER: Yes

**Q8: Would you support legislation that allows public school teachers to read the Bible during class time without instruction or comment?**

MOYLE: No Response

PARKER: No

**Q9: Do you support legal protections for the privacy and safety of biological females in bathrooms, locker rooms, government buildings, and prisons?**

MOYLE: No Response

PARKER: Yes

**Q10: Would you support extending the state child tax credit to preborn children?**

MOYLE: No Response

PARKER: No

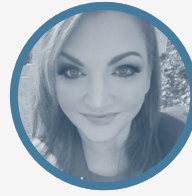
# STATE HOUSE DISTRICT 10B

## CANYON COUNTY



**BRUCE SKAUG (R)**

[VIEW FULL SURVEY RESPONSES](#)



**SHANA TREMAINE (D)**

NO RESPONSE

**Q1: Do you support strengthening Idaho's pro-life laws by removing the existing exceptions for cases of rape and incest?**

SKAUG: Yes

TREMAINE: No Response

**Q2: Do you support a prohibition on abortifacients that can end preborn life after fertilization, including Plan B, Julie, Ella, and copper or hormonal IUDs?**

SKAUG: Yes

TREMAINE: No Response

**Q3: Would you support legislation that holds educators and school districts accountable for indoctrinating students with critical race theory, gender ideology, and Diversity, Equity, and Inclusion (DEI) ideology?**

SKAUG: Yes

TREMAINE: No Response

**Q4: Would you support legislation that makes sexual education parental opt-in rather than opt-out?**

SKAUG: Yes

TREMAINE: No Response

**Q5: Would you support legislation that protects traditional, biblical marriage between one man and one woman?**

SKAUG: Yes

TREMAINE: No Response

**Q6: Would you support legislation that prohibits displays of indecency, such as drag exhibitions, in public places when minors are present?**

SKAUG: Yes

TREMAINE: No Response

**Q7: Do you support the legalization of medical or recreational marijuana in Idaho?**

SKAUG: No

TREMAINE: No Response

**Q8: Would you support legislation that allows public school teachers to read the Bible during class time without instruction or comment?**

SKAUG: Yes

TREMAINE: No Response

**Q9: Do you support legal protections for the privacy and safety of biological females in bathrooms, locker rooms, government buildings, and prisons?**

SKAUG: Yes

TREMAINE: No Response

**Q10: Would you support extending the state child tax credit to preborn children?**

SKAUG: Yes

TREMAINE: No Response